



Front dimensions: 25 x 25 mm
Panel cut-out: Ø 16.2 mm
Front bezel height: 7.5 mm
Travel: 3 mm



 Product configurator



OKTRON

Overview OKTRON series



01 Pushbutton heads

page 020

06 Toggle heads

page 025

02 Emergency-stop heads

page 022

07 Key actuators

page 026

03 Mushroom heads

page 023

08 Buzzers

page 028

04 Knob set for potentiometers

page 024

09 Pilot light heads / pilot lights

page 030

05 Selector heads

page 024

Contact blocks/lampholders

page 414

Housing colours



degree of protection



operating travel



tactile

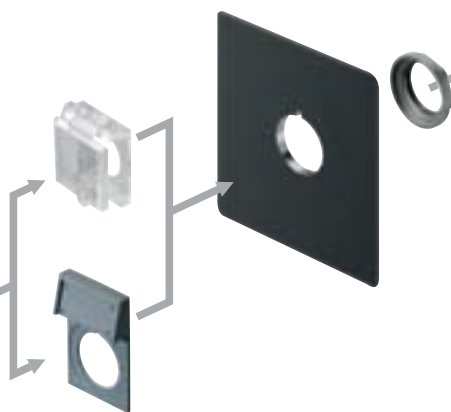


illuminating option



labelling option





- 

CT
CT...
Contact blocks
Faston terminals
page 502
- 

CZ
CZ...
Contact blocks
PCB-mount terminals
page 494
- 

CTP
CTP...
Contact blocks
PCB-mount terminals
page 480
- 

CTF
CTF...
Contact blocks
Faston terminals
page 486
- 

FRTP
FRTP...
Contact blocks
PCB-mount terminals
page 508
- 

FRTF
FRTF...
Contact blocks
Faston terminals
page 514
- 

B
BZ
B...
Contact blocks
Faston terminals
page 436
- 

B...x
BZ...x
B...
Contact blocks
screw connection
page 444
- 

ASI
ASI...
Contact blocks
for AS-Interface
page 554
- 

ASI
ASI...
Contact blocks
for AS-Interface
Safety @ Work
page 560

About Us

→ Pushbuttons and Switches

Panel Mount Jacks

Emergency-Stop Buttons

Bus Technology

RFID

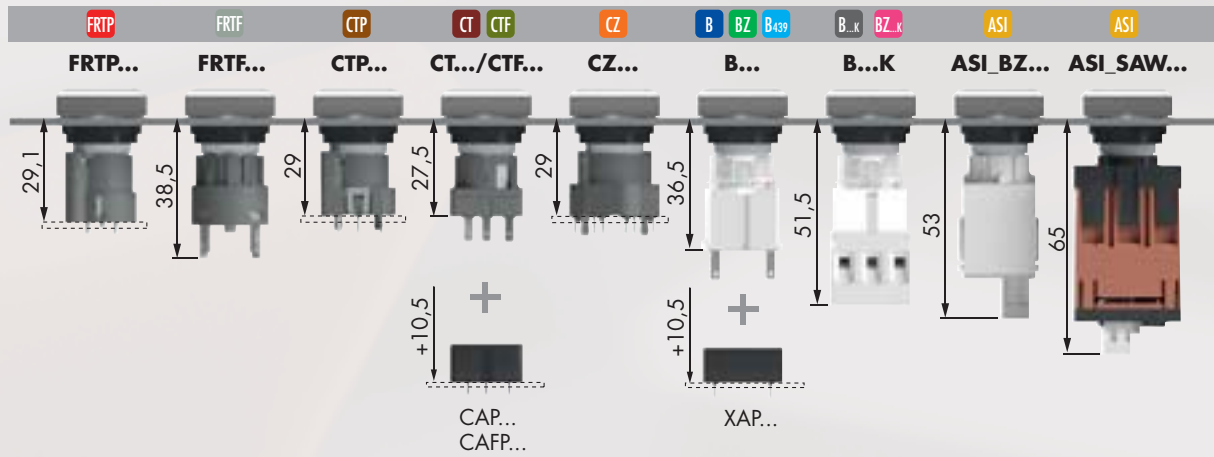
Enclosures

Pedal Switches

Terminal Blocks

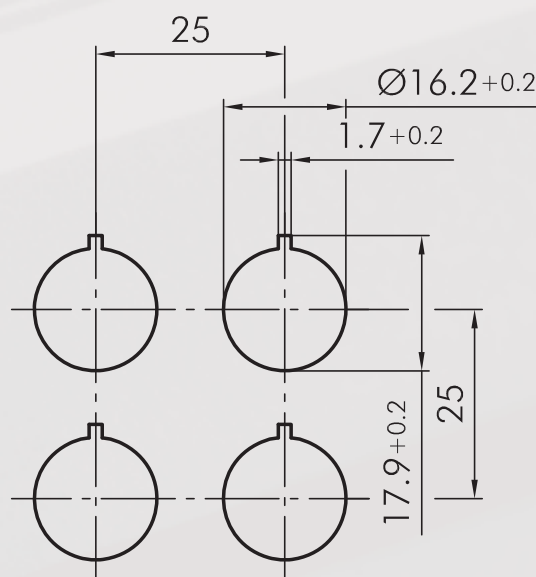
Type Index

Mounting depth dimensions

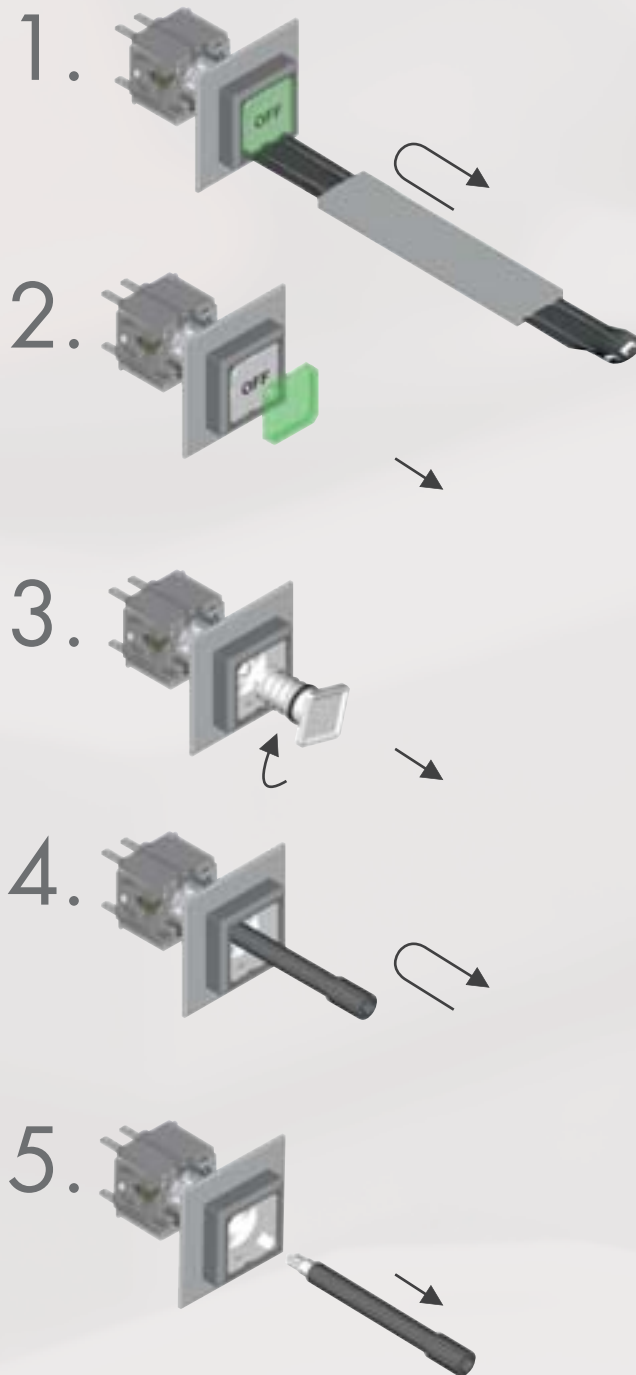


Cutout dimensions

Min. mounting grid 25 x 38 mm when using external nameplate holders.



Mounting and service instructions



Pushbuttons

lenses and nameplates to be ordered separately

Illustration

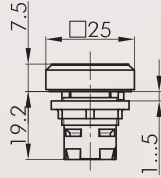
Dimensions

Description

Type

IP65

3 mm



Pushbutton head

suitable contact blocks:

BUS ASI AZ B B...K BZ BZ...K B439 CT CTF CTP CZ

front bezel:

charcoal



OKT

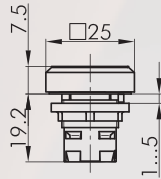
silver-coloured



OKTM

IP65

3 mm



Pushbutton head with window for illumination

the light is concentrated to the border of the lens

suitable contact blocks:

BUS ASI AZ B B...K BZ BZ...K B439 CT CTF CTP CZ

front bezel:

charcoal



OKTLL

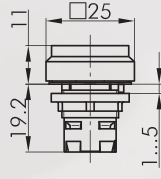
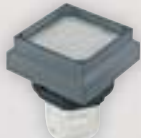
silver-coloured



OKTLLM

IP65

3 mm



Pushbutton head with high front bezel

suitable contact blocks:

BUS ASI AZ B B...K BZ BZ...K B439 CT CTF CTP CZ

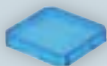
front bezel:

charcoal



OKH

Accessories



Flat lens, transparent

colour:

blue



TOKFBL

yellow



TOKFGB

green



TOKFGN

clear



TOKFKL

red



TOKFRT

opal white



TOKFWS



Flat lens, non-transparent

used for pushbuttons without inscription and illumination

colour:

charcoal



TOKFGDG

blue



TOKFGBL

yellow



TOKFGGB

green



TOKFGGN

black



TOKFGSW

red

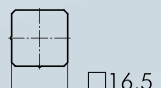


TOKFGRT

white



TOKFGWS

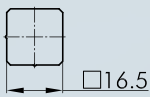





Nameplate with standard imprint

please specify index number (see nameplates from page 634)

BSOK...

Accessories for Pushbuttons and Switches

| Illustration | Dimensions | Description | Type |
|--|------------|---|------------------|
|  | 16.5 | Nameplate with special imprint according to customer's specification | BSOKB |
|  | 16.5 | Blank nameplate | BSOKU |
|  | 16.5 | Nameplate with standard imprint please specify index number(see nameplates from page 634) | BSOKLL... |
|  | 16.5 | Blank nameplate | BSOKLLU |

Mushroom Pushbuttons

Illustration

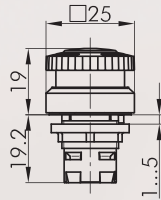
Dimensions

Description

Type

IP65
IP67

3 mm



Illuminated emergency-stop head

other mushroom colours on request

Foolproof: no
 Switching position indicator: no
 Permissive Contact: no
 Anti-lock collar: no
 Release: twist right or left
 Standard: EN 60947-5-1, EN 60947-5-5,
 EN ISO 13850



suitable contact blocks:

AZ BZ BZ.k FRTP PTP

front bezel: yellow



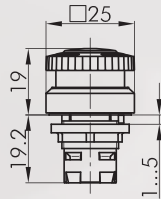
mushroom head: red



OKVGB

IP65

3 mm



Emergency-stop head with illuminating and labelling option

including blank nameplate (inscription on request)

Foolproof: no
 Switching position indicator: no
 Permissive Contact: no
 Anti-lock collar: no
 Release: twist right or left

suitable contact blocks:

AZ BZ BZ.k

front bezel: yellow



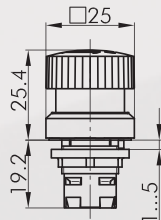
mushroom head: red



OKVLGB

IP65
IP67

3 mm



Emergency-stop head

Foolproof: yes
 Switching position indicator: no
 Permissive Contact: no
 Anti-lock collar: no
 Release: twist right or left
 Standard: EN 60947-5-1, EN 60947-5-5,
 EN ISO 13850



suitable contact blocks:

AZ BZ BZ.k FRTP PTP

front bezel: yellow



mushroom head: red



OKUVGB

Mushroom Pushbuttons

Illustration

Dimensions

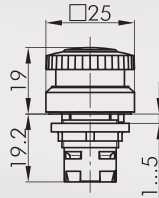
Description

Type



For further emergency-stops, please refer to the chapter "Emergency-Stop Head" starting on page 594

The emergency-stop heads can also be supplied as latching mushroom heads with mushrooms in different colours.



Mushroom head, momentary

other mushroom colours on request

Switching position indicator: no

Permissive Contact: no

Anti-lock collar: no

suitable contact blocks:

BUS AZ B B...K BZ BZ...K B439 CT CTF CTP CZ

front bezel: charcoal

mushroom head: red

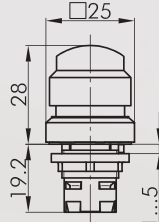
front bezel: silver-coloured

mushroom head: red



OKS

OKSM



Pushbutton head, latch-type

red knob, momentary function on the left, latching/switching function on the right, other mushroom colours on request

Switching position indicator: no

Permissive Contact: no

Anti-lock collar: no

suitable contact blocks:

BUS AZ B B...K BZ BZ...K B439 CT CTF CTP CZ

front bezel: red

mushroom head: red

front bezel: silver-coloured

mushroom head: red



OKTV

OKTVM

Potentiometers

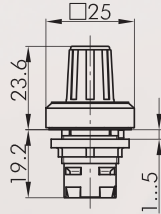
Illustration

Dimensions

Description

Type

IP65



Knob set for potentiometers

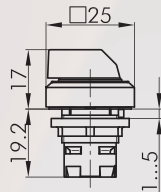
for potentiometers of 6 mm shaft dia. and thread M10x0.75
delivery without potentiometer
shaft length: approx. 32 mm

front bezel: charcoal silver-coloured



OKR
OKRM

IP65



Selector head, maintained

suitable contact blocks:

BUS ASI AZ B B...K BZ BZ.k B439 CT CTF CTP CZ

front bezel: charcoal silver-coloured



OKWA
OKWAM

suitable contact blocks:

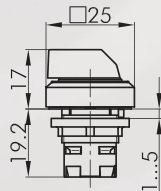
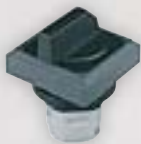
ASI AZ BZ BZ.k B439 CT CZ

front bezel: charcoal silver-coloured



OKWB
OKWBM

IP65



Selector head, momentary

suitable contact blocks:

BUS ASI AZ B B...K BZ BZ.k B439 CT CTF CTP CZ

front bezel: charcoal silver-coloured



OKSTA
OKSTAM

suitable contact blocks:

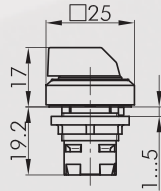
ASI AZ BZ BZ.k B439 CT CZ

front bezel: charcoal silver-coloured



OKSTB
OKSTBM

IP65



Selector head, left maintained, right momentary

suitable contact blocks:

ASI AZ BZ BZ.k B439 CT CZ

front bezel: charcoal silver-coloured



OKWC
OKWCM

Selector Switches (momentary/maintained)

l = Switching position
> = Spring return

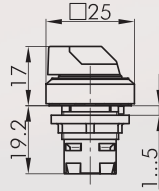
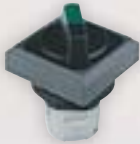
Illustration

Dimensions

Description

Type

IP65



Illuminated selector head, maintained

knob available in blue-BL, yellow-GB, clear-KL, green-GN, red-RT (e.g. OKWAL_GN)

suitable contact blocks:

BUS ASI AZ B B...x BZ BZ...x B439 CT CTF CTP CZ

front bezel: charcoal silver-coloured



OKWAL...
OKWALM...

suitable contact blocks:

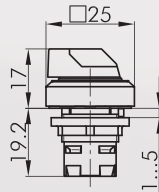
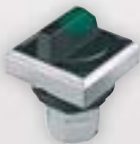
ASI AZ BZ BZ...x B439 CT CZ

front bezel: charcoal silver-coloured



OKWBL...
OKWBLM...

IP65



Illuminated selector head, momentary

knob available in blue-BL, yellow-GB, clear-KL, green-GN, red-RT (e.g. OKSTAL_GN)

suitable contact blocks:

BUS ASI AZ B B...x BZ BZ...x B439 CT CTF CTP CZ

front bezel: charcoal silver-coloured



OKSTAL...
OKSTALM...

suitable contact blocks:

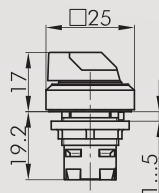
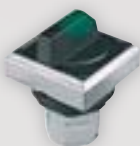
ASI AZ BZ BZ...x B439 CT CZ

front bezel: charcoal silver-coloured



OKSTBL...
OKSTBLM...

IP65



Illuminated selector head, left maintained, right momentary

knob available in blue-BL, yellow-GB, clear-KL, green-GN, red-RT (e.g. OKWCL_GN)

suitable contact blocks:

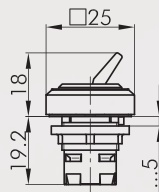
ASI AZ BZ BZ...x B439 CT CZ

front bezel: charcoal silver-coloured



OKWCL...
OKWCLM...

IP65



Toggle head

red toggle (other colours on request)

suitable contact blocks:

BUS AZ B B...x BZ BZ...x B439 CT CTF CTP CZ

front bezel: charcoal silver-coloured

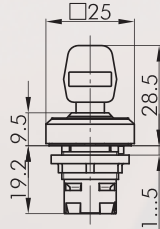
OKK_RT
OKKM_RT

Key Switches (momentary/maintained)

I = Switching position
> = Spring return
O = Key removable position

Illustration Dimensions Description Type

IP65



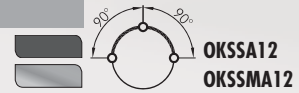
Key actuator, maintained

including two keys
other lock types on request

suitable contact blocks:

ASI AZ BZ BZ.x B439 CT CZ

front bezel: charcoal silver-coloured



suitable contact blocks:

ASI AZ BZ BZ.x B439 CT CZ

front bezel: charcoal silver-coloured



suitable contact blocks:

ASI AZ B B.x BZ BZ.x B439 CT CTF CTP CZ

front bezel: charcoal silver-coloured



suitable contact blocks:

ASI AZ B B.x BZ BZ.x B439 CT CTF CTP CZ

front bezel: charcoal silver-coloured



suitable contact blocks:

ASI AZ B B.x BZ BZ.x B439 CT CTF CTP CZ

front bezel: charcoal silver-coloured



suitable contact blocks:

ASI AZ B B.x BZ BZ.x B439 CT CTF CTP CZ

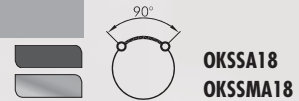
front bezel: charcoal silver-coloured



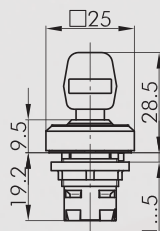
suitable contact blocks:

ASI AZ B B.x BZ BZ.x B439 CT CTF CTP CZ

front bezel: charcoal silver-coloured



IP65



Key actuator, maintained (3 different keys)

including three keys
1st key: two-way operation
2nd key: operation to the left only
3rd key: operation to the right only

suitable contact blocks:

ASI AZ BZ BZ.x B439 CT CZ

front bezel: charcoal silver-coloured



Key Switches (momentary/maintained)

I = Switching position
> = Spring return
O = Key removable position

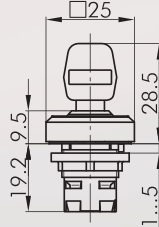
Illustration

Dimensions

Description

Type

IP65



Key actuator, momentary

including two keys
other lock types on request

suitable contact blocks:

ASI AZ BZ BZ.k B439 CT CZ

front bezel:

charcoal
silver-coloured



OKSSA23
OKSSMA23

suitable contact blocks:

ASI AZ B B.k BZ BZ.k B439 CT CTF CTP CZ

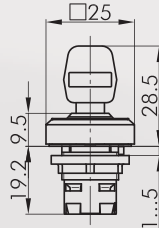
front bezel:

charcoal
silver-coloured



OKSSA28
OKSSMA28

IP65



Key actuator, left maintained, right momentary

including two keys
other lock types on request

suitable contact blocks:

ASI AZ BZ BZ.k B439 CT CZ

front bezel:

charcoal
silver-coloured



OKSSA25
OKSSMA25

Accessories



Standard spare keys

standard spare key, specify key number for special locks

ESMIC482

About Us

→ Pushbuttons
and Switches

Panel Mount Locks

Emergency-Stop Buttons

Bus Technology

RFID

Enclosures

Pedal Switches

Terminal Blocks

Type Index

Buzzers

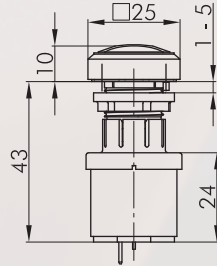
Illustration

Dimensions

Description



Type

IP65



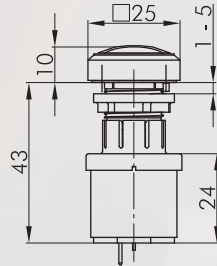
Buzzer

operating voltage: 12 ... 24V DC
 operating current: 5mA (12V DC)
 16mA (24V DC)
 signal frequency: 3.8 +/- 0.5 kHz
 volume: max. 85 db (10 cm, 24V)
 max. 75 db (10 cm, 12V)
 operating temperature: -20°C ... 60°C
 connection type: Faston terminals 2.8x0.8 mm

front bezel: charcoal 
 silver-coloured 

OKNSG+SG-24V
OKNMSG+SG-24V

IP65



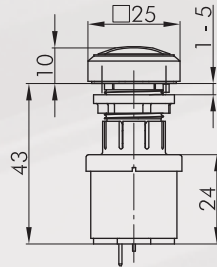
Interval buzzer

operating voltage: 12 ... 24V DC
 operating current: max. 30mA
 signal frequency: 3.5 +/- 0.5 kHz
 volume: max. 85 db (10 cm, 24V)
 max. 75 db (10 cm, 12V)
 intervall: 1s
 operating temperature: -20°C ... 60°C
 connection type: Faston terminals 2.8x0.8 mm

front bezel: charcoal 
 silver-coloured 

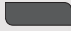

OKNSG+SGL-24V
OKNMSG+SGL-24V

IP65



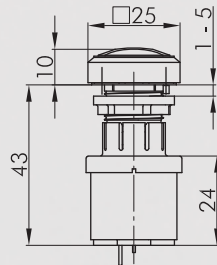
Illuminated buzzer

operating voltage: 12 ... 24V AC/DC
 operating current: abt. 30mA
 signal frequency: 3.5 +/- 0.5 kHz
 volume: max. 85 db (10 cm, 24V)
 max. 75 db (10 cm, 12V)
 operating temperature: -20°C ... 60°C
 connection type: Faston terminals 2.8x0.8 mm

front bezel: charcoal 
 argenté 

OKNSGL+SGLR-24V
OKNMSG+SGLR-24V

IP65






Illuminated interval buzzer

operating voltage: 12 ... 24V DC
 operating current: abt. 30mA
 signal frequency: 3.5 +/- 0.5 kHz
 volume: max. 85 db (10 cm, 24V)
 max. 75 db (10 cm, 12V)
 intervall: 1s
 operating temperature: -20°C ... 60°C
 connection type: Faston terminals 2.8x0.8 mm

front bezel: charcoal 
 silver-coloured 

OKNSGL+SGLR-24V
OKNMSG+SGLR-24V

Accessories for Pushbuttons and Switches

| Illustration | Dimensions | Description | Type |
|---|------------|---|--------------|
| Accessories | | | |
|  | | Faston clamp 2.8 x 0.8 mm with snap-in pin cross section 0.75 - 1.50 mm ² , tin-plated brass, with pin to snapfit into the sockets XA, XAL and the insulating case IH2.8 | FH2,8 |
|  | | Insulating case for Faston clamp FH2,8, slip on from the front | IH2,8 |
|  | | Double Faston for the connection of 2 Faston clamps FH2.8 | FD2,8 |

About Us

→ Pushbuttons and Switches

Panel Mount Jacks

Emergency-Stop Buttons

Bus Technology

RFID

Enclosures

Pedal Switches

Terminal Blocks

Type Index

Pilot Lights

lenses and nameplates to be ordered separately

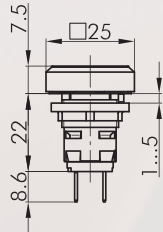
Illustration

Dimensions

Description

Type

IP65



Pilot light with Faston terminals 2.8x0.8 mm

W2x4.6d socket

Connection type:

Faston terminals 2.8x0.8 mm

front bezel

charcoal



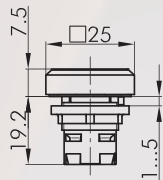
OKL4

silver-coloured



OKL4M

IP65



Pilot light head

suitable lampholders:

ASI B B...K CT CTF CTP CZ

front bezel:

charcoal



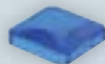
OKN

silver-coloured



OKNM

Accessories



Convex lens, transparent

colour:

blue



KOKFBL

yellow



KOKFGB

green



KOKFGN

clear



KOKFKL

red

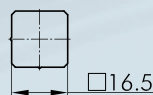


KOKFRT

white



KOKFWS



Nameplate with standard imprint

BSOK...

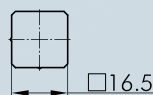
please specify index number (see nameplates from page 634)



Nameplate with special imprint

BSOKB

according to customer's specification



Blank nameplate

BSOKU

Accessories for Pushbuttons and Switches

| Illustration | Dimensions | Description | Type |
|---|------------|--|--------------------------------|
|  | | Mounting tool 16 with torque limitation for the series OKTRON, OKTRON-JUWEL, OKTRON-R, RONTRON-R-JUWEL, RONTRON-Q-JUWEL, QUARTRON, QUARTRON-JUWEL, RX-JUWEL | S16 |
|  | | Mounting tool adapter with 1/4" connections for mounting tools S16 and S22 | SRA |
|  | | External nameplate holder for outside marking of the actuators of the QUARTRON and OKTRON series, accepts self-adhesive nameplates colour: charcoal  silver-coloured  | QXABT QXABT_M |
| | | Self-adhesive nameplate laser-printed inscription according to customer's specification dimensions: 22 x 11 mm | BZ16L... |
|  | | Self-adhesive nameplate blank dimensions: 22 x 11 mm | BZ16U |
|  | | Self-adhesive nameplate with standard imprint please specify index number (see nameplates from page 634) dimensions: 22 x 11 mm | BZ16B... |
|  | | Yellow nameplate self-adhesive PVC foil printing on request outer dia. 60 mm for mounting dia. 16 mm colour: yellow  | NAS_16 |
|  | | Yellow nameplate with quadrilingual imprint self-adhesive PVC foil outer dia. 60 mm for mounting dia. 16 mm colour: yellow  | NAS_16_548 |

About Us

→ Pushbuttons and Switches

Panel Mount Jacks

Emergency-Stop Buttons

Bus Technology

RFID


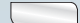


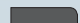
Enclosures

Pedal Switches

Terminal Blocks

Type Index

Accessories for Pushbuttons and Switches

| Illustration | Dimensions | Description | Type |
|---|------------|--|--------------|
|  | | Lead-sealable protective lid fits onto the pushbuttons of the OKTRON series colour: transparent  | KDOK |
|  | | Universal lens remover | USK |
|  | | Square dummy to close unused mounting apertures colour: charcoal  | Q16DG |

IP65

About Us

→ Pushbuttons
and Switches

Panel Mount Jacks

Emergency-Stop Buttons

Bus Technology

RFID

Enclosures

Pedal Switches

Terminal Blocks

Type Index