


Front dimensions: 28 x 28 mm
Panel cut-out: Ø 22.3 mm
Front bezel height: 2 mm
Travel: 3 mm





RONTRON-Q-JUWEL

 Product configurator



RONTRON-Q-JUWEL

Ø 22.3 mm

MADE IN GERMANY



About Us

Pushbuttons and Switches

Panel Mount Jacks

Emergency-Stop Buttons

Bus Technology

RFD

Enclosures

Pedal Switches

Terminal Blocks

Type Index

Overview RONTRON-Q-JUWEL series



01 Pushbutton heads	page 110	07 Panel mount jacks	page 118
02 Emergency-stop heads	page 111	08 Pilot light heads / pilot lights	page 120
03 Knob set for potentiometers	page 112	Contact blocks/lampholders	page 414
04 Selector heads	page 112		
05 Key actuators	page 114		
06 Buzzers	page 116		

Housing colour



degree of protection



operating travel



tactile

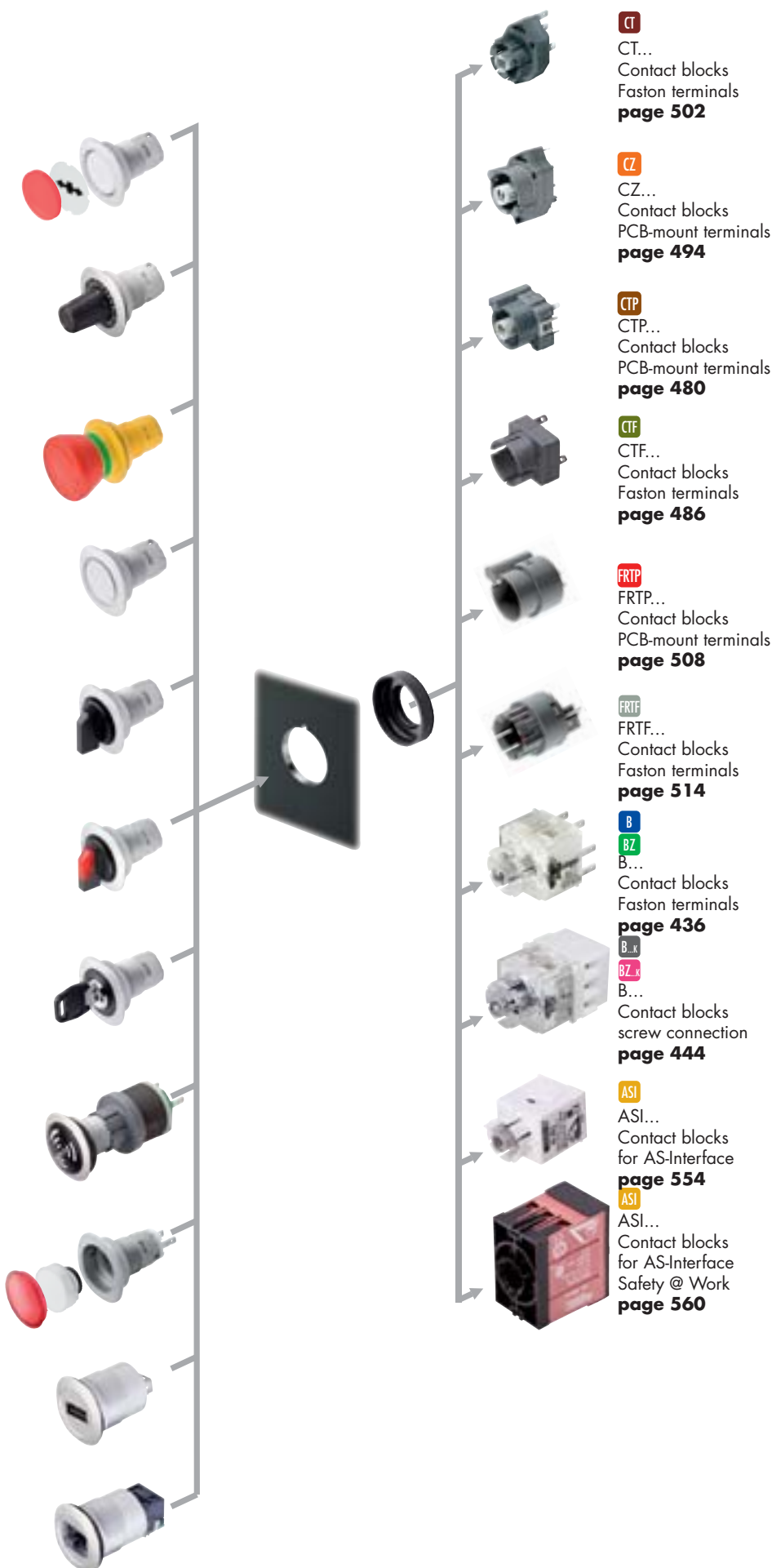


illuminating option



labelling option





CT

CT...
Contact blocks
Faston terminals
page 502

CZ

CZ...
Contact blocks
PCB-mount terminals
page 494

CTP

CTP...
Contact blocks
PCB-mount terminals
page 480

CTF

CTF...
Contact blocks
Faston terminals
page 486

F RTP

F RTP...
Contact blocks
PCB-mount terminals
page 508

F RTF

F RTF...
Contact blocks
Faston terminals
page 514

B

BZ
B...
Contact blocks
Faston terminals
page 436

B...K

BZ...K
B...
Contact blocks
screw connection
page 444

ASI

ASI...
Contact blocks
for AS-Interface
page 554

ASI

ASI...
Contact blocks
for AS-Interface
Safety @ Work
page 560

About Us

→ Pushbuttons and Switches

Panel Mount Jacks

Emergency-Stop Buttons

Bus Technology

RFID

Enclosures

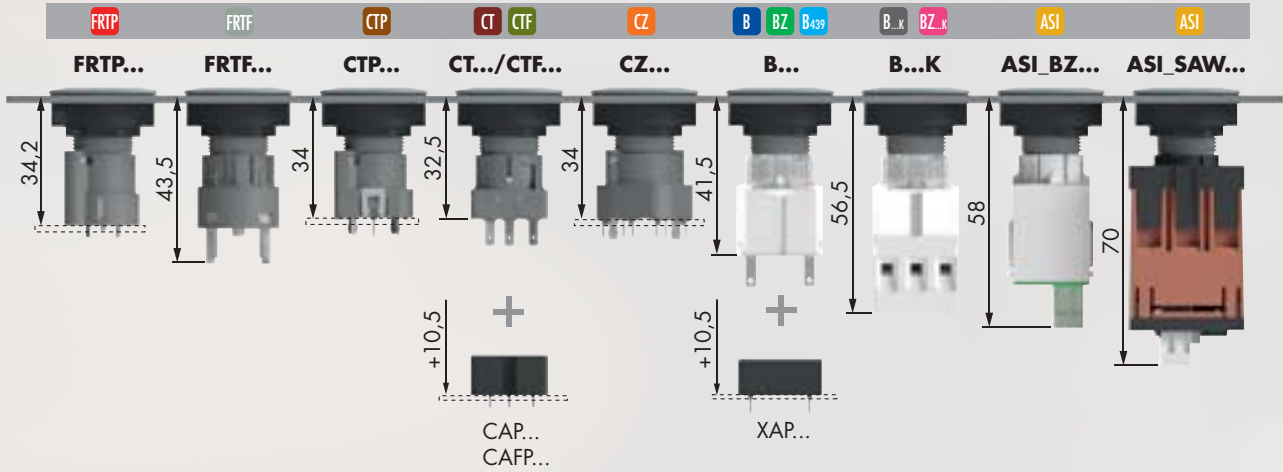
Pedal Switches

Terminal Blocks

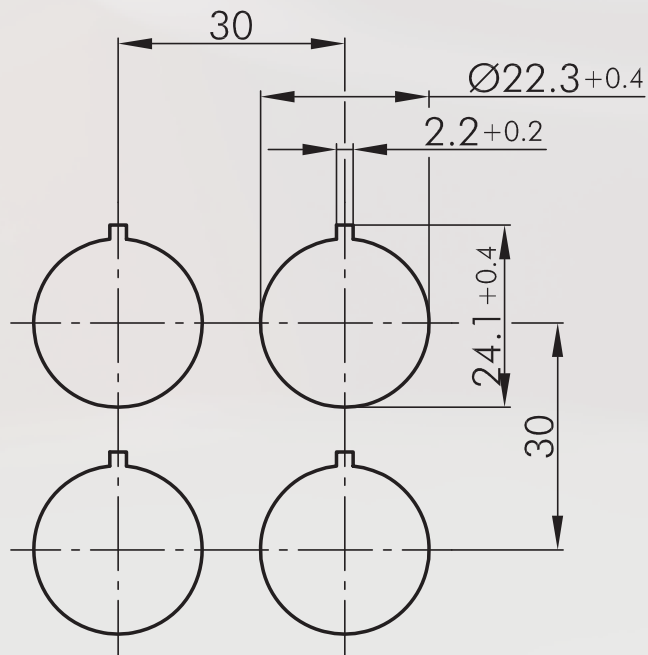
Type Index

Ø 22.3 mm

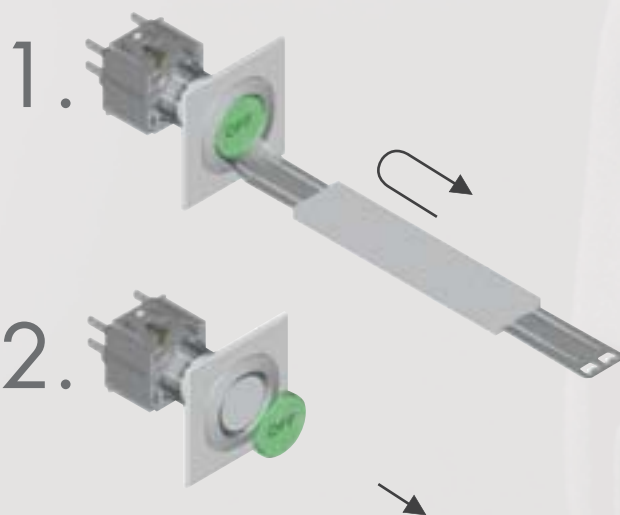
Mounting depth dimensions



Cutout dimensions



Mounting and service instructions



RONTRON-Q-JUWEL

Ø 22.3 mm

MADE IN GERMANY



About Us

Pushbuttons and Switches

Panel Mount Jacks

Emergency-Stop Buttons

Bus Technology

RFD

Enclosures

Pedal Switches

Terminal Blocks

Type Index

Pushbuttons

lenses and nameplates to be ordered separately

Illustration	Dimensions	Description	Type
<p>IP65 3 mm Sun icon Hand icon</p>	<p>28 2.3 24.3 1.5...5</p>	Pushbutton head suitable contact blocks ASI AZ B B...k BZ BZ...k B439 CT CTF CTP CZ front bezel: silver-coloured	RQJT
<p>IP65 3 mm Sun icon</p>	<p>28 2 24.3 1.5...5</p>	Pushbutton head with ring illumination incl. lens, inscription on request suitable contact blocks ASI AZ B B...k BZ BZ...k B439 CT CTF CTP CZ front bezel: silver-coloured black	RQJTLR RQJTLRSW
<p>IP65 3 mm Sun icon Hand icon</p>	<p>28 2 24.3 1.5...5</p>	Pushbutton head with ring illumination and laser printing with push-cap standard imprint, see nameplates from page 634 (please specify index number) special inscription on request ASI AZ B B...k BZ BZ...k B439 CT CTF CTP CZ front bezel: silver-coloured	RQJTLRL...
<p>IP65 3 mm Sun icon</p>	<p>28 2.3 24.3 1.5...5</p>	Pushbutton head with ring illumination, white coated incl. lens suitable contact blocks ASI AZ B B...k BZ BZ...k B439 CT CTF CTP CZ front bezel: white	RQJTLREWS
<p>IP65 3 mm Sun icon</p>	<p>28 2 24.3 1.5...5</p>	Pushbutton head with ring illumination and burl wood decor incl. lens suitable contact blocks ASI AZ B B...k BZ BZ...k B439 CT CTF CTP CZ front bezel: burl wood decor	RQJTLRE01
<p>IP65 3 mm Sun icon</p>	<p>28 2 24.3 1.5...5</p>	Pushbutton head with ring illumination and carbon decor incl. lens suitable contact blocks ASI AZ B B...k BZ BZ...k B439 CT CTF CTP CZ front bezel: carbon decor	RQJTLRE02

Accessories for Pushbuttons and Switches

Illustration

Dimensions

Description

Type

Accessories



Flat lens, transparent

colour:	blue		T22RRBL
	yellow		T22RRGB
	green		T22RRGN
	clear		T22RRKL
	red		T22RRRT
	opal white		T22RRWS



Flat lens, non-transparent

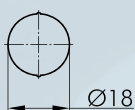
for pushbuttons without inscription and illumination

colour:	blue		T22RRGBL
	yellow		T22RRGGB
	green		T22RRGGN
	black		T22RRGSW
	red		T22RRGRT
	white		T22RRGWS
	silver-coloured		T22RRGM



High lens, transparent

colour:	blue		T22HRRBL
	yellow		T22HRRGB
	green		T22HRRGN
	clear		T22HRRKL
	red		T22HRRRT
	opal white		T22HRRWS



Blank nameplate

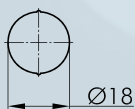
BSRRU



Nameplate with standard imprint

BSRR...

please specify index number (see nameplates from page 634)



Nameplate with special imprint

BSRRB

according to customer's specification



For further emergency-stops, please refer to the chapter "Emergency-Stop Head" starting on page 594

The emergency-stop heads can also be supplied as latching mushroom heads with mushrooms in different colours.

RONTRON-Q-JUWEL

Ø 22.3 mm

MADE IN GERMANY



About Us

Pushbuttons and Switches

Panel Mount Jacks

Emergency-Stop Buttons

Bus Technology

RFD

Enclosures

Pedal Switches

Terminal Blocks

Type Index

Potentiometers

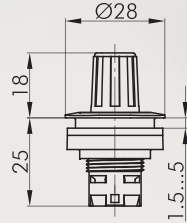
Illustration

Dimensions

Description

Type

IP65



Knob set for potentiometers

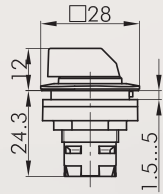
for potentiometers of 6 mm shaft dia. and thread M10 x 0.75
delivery without potentiometer
shaft length: approx. 32 mm

front bezel: silver-coloured



RQJR

IP65



Selector head, maintained

suitable contact blocks:

ASI AZ B B... BZ BZ... B439 CT CTF CTP CZ

front bezel: silver-coloured



RQJWA



suitable contact blocks:

ASI AZ BZ BZ... B439 CT CZ

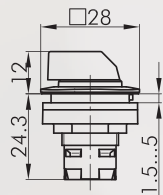
front bezel: silver-coloured



RQJWB



IP65



Selector head, momentary

suitable contact blocks:

ASI AZ B B... BZ BZ... B439 CT CTF CTP CZ

front bezel: silver-coloured



RQJSTA



suitable contact blocks:

ASI AZ BZ BZ... B439 CT CZ

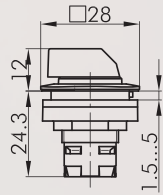
front bezel: silver-coloured



RQJSTB



IP65



Selector head, left maintained, right momentary

suitable contact blocks:

ASI AZ BZ BZ... B439 CT CZ

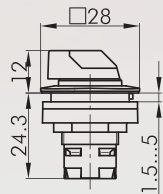
front bezel: silver-coloured



RQJWC



IP65



Illuminated selector head, maintained

knob available in blue-BL, yellow-GB, clear-KL, green-GN, red-RT
(e.g. RQJWAL_GN)

suitable contact blocks:

ASI AZ B B... BZ BZ... B439 CT CTF CTP CZ

front bezel: silver-coloured



RQJWAL...



suitable contact blocks:

ASI AZ BZ BZ... B439 CT CZ

front bezel: silver-coloured



RQJWBL...



Selector Switches (momentary/maintained)

I = Switching position
> = Spring return

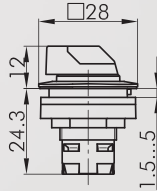
Illustration

Dimensions

Description

Type

IP65



Illuminated selector head, momentary

knob available in blue-BL, yellow-GB, clear-KL, green-GN, red-RT (e.g. RQJSTAL_GN)

suitable contact blocks:

ASI AZ B B...K BZ BZ...K B439 CT CTF CTP CZ

front bezel: silver-coloured



RQJSTAL...

suitable contact blocks:

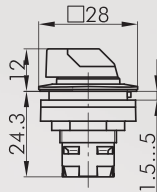
ASI AZ BZ BZ...K B439 CT CZ

front bezel: silver-coloured



RQJSTBL...

IP65



Illuminated selector head, left maintained, right momentary

knob available in blue-BL, yellow-GB, clear-KL, green-GN, red-RT (e.g. RQJWCL_GN)

suitable contact blocks:

ASI AZ BZ BZ...K B439 CT CZ

front bezel: silver-coloured



RQJWCL...

RONTRON-Q-JUWEL

Ø 22.3 mm

MADE IN GERMANY



About Us

Pushbuttons and Switches

Panel Mount Jacks

Emergency-Stop Buttons

Bus Technology

RFD

Enclosures

Pedal Switches

Terminal Blocks


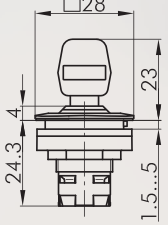
Type Index

Key Switches (momentary/maintained)

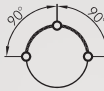
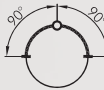





I = Switching position
> = Spring return
O = Key removable position

Illustration	Dimensions	Description	Type
--------------	------------	-------------	------


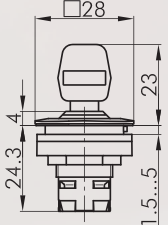
IP65

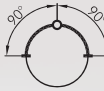
Key actuator, maintained
including two keys
other lock types on request

<p>suitable contact blocks: ASI AZ BZ BZ.k B439 CT CZ</p>	front bezel: silver-coloured		RQJSSA12
<p>suitable contact blocks: ASI AZ BZ BZ.k B439 CT CZ</p>	front bezel: silver-coloured		RQJSSA13
<p>suitable contact blocks: ASI AZ B B...k BZ BZ.k B439 CT CTF CTP CZ</p>	front bezel: silver-coloured		RQJSSA14
<p>suitable contact blocks: ASI AZ B B...k BZ BZ.k B439 CT CTF CTP CZ</p>	front bezel: silver-coloured		RQJSSA15
<p>suitable contact blocks: ASI AZ B B...k BZ BZ.k B439 CT CTF CTP CZ</p>	front bezel: silver-coloured		RQJSSA16
<p>suitable contact blocks: ASI AZ B B...k BZ BZ.k B439 CT CTF CTP CZ</p>	front bezel: silver-coloured		RQJSSA17
<p>suitable contact blocks: ASI AZ B B...k BZ BZ.k B439 CT CTF CTP CZ</p>	front bezel: silver-coloured		RQJSSA18


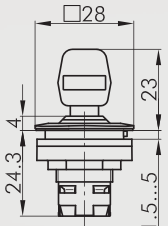
IP65



Key actuator, maintained (3 different keys)
including three keys
1st key: two-way operation
2nd key: operation to the left only
3rd key: operation to the right only

<p>suitable contact blocks: ASI AZ BZ BZ.k B439 CT CZ</p>	front bezel: silver-coloured		RQJSSA31
---	------------------------------	---	-----------------

IP65

Key actuator, momentary
including two keys
other lock types on request

<p>suitable contact blocks: ASI AZ BZ BZ.k B439 CT CZ</p>	front bezel: silver-coloured		RQJSSA23
<p>suitable contact blocks: ASI AZ B B...k BZ BZ.k B439 CT CTF CTP CZ</p>	front bezel: silver-coloured		RQJSSA28

Key Switches (momentary/maintained)

I = Switching position
> = Spring return
O = Key removable position

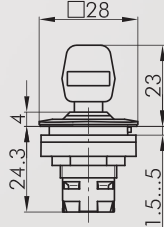
Illustration

Dimensions

Description

Type

IP65



Key actuator, left maintained, right momentary

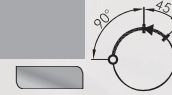
including two keys
other lock types on request

suitable contact blocks:



front bezel:

silver-coloured



RQJSSA25

Accessories



Standard spare keys

standard spare key, specify key number for special locks

ESMIC482

About Us

→ Pushbuttons
and Switches

Panel Mount Jacks

Emergency/Stop Buttons

Bus Technology

RFID

Enclosures

Pedal Switches

Terminal Blocks

Type Index

Buzzers

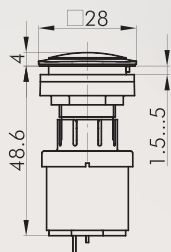
Illustration

Dimensions

Description

Type

IP65



Buzzer

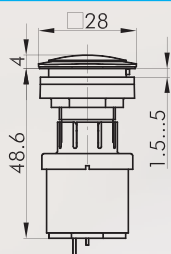
operating voltage: 12 ... 24V DC
operating current: 5mA (12V DC)
16mA (24V DC)
signal frequency: 3.8 +/- 0.5 kHz
volume: max. 90 db (10 cm, 24V)
max. 85 db (10 cm, 12V)
operating temperature: -20°C ... 60°C
Connection type: Faston terminals 2.8x0.8 mm

front bezel: silver-coloured



RQJNSG+SG-24V

IP65



Interval buzzer

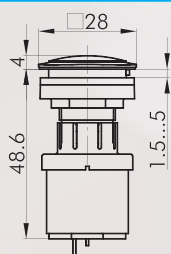
operating voltage: 12 ... 24V DC
operating current: max. 30mA
signal frequency: 3.5 +/- 0.5 kHz
volume: max. 90 db (10 cm, 24V)
max. 85 db (10 cm, 12V)
intervall: 1s
operating temperature: -20°C ... 60°C
Connection type: Faston terminals 2.8x0.8 mm

front bezel: silver-coloured



RQJNSG+SGL-24V

IP65



Illuminated buzzer

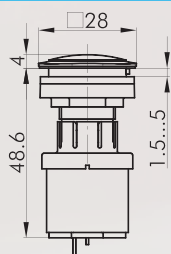
operating voltage: 12 ... 24V AC/DC
operating current: max. 30mA
signal frequency: 3.5 +/- 0.5 Hz
volume: max. 90 db (10cm, 24V)
max. 85 db (10cm, 12V)
operating temperature: -20°C ... 60°C
Connection type: Faston terminals 2.8x0.8 mm

front bezel: silver-coloured



RQJNSGL+SGLR-24V

IP65



Illuminated interval buzzer

operating voltage: 12 ... 24V DC
operating current: abt. 30mA
signal frequency: 3.5 +/- 0.5 kHz
volume: max. 90 db (10 cm, 24V)
max. 85 db (10 cm, 12V)
intervall: 1s
operating temperature: -20°C ... 60°C
Connection type: Faston terminals 2.8x0.8 mm

front bezel: silver-coloured



RQJNSGL+SGLR-24V

Accessories



Faston clamp 2.8 x 0.8 mm with snap-in pin

FH2,8

cross section 0.75 - 1.50 mm², tin-plated brass, with pin to snapfit into the sockets XA, XAL and the insulating case IH2.8

Accessories for Pushbuttons and Switches

Illustration

Dimensions

Description

Type



Insulating case

for Faston clamp FH2,8, slip on from the front

IH2,8

About Us

→ Pushbuttons
and Switches

Panel Mount Jacks

Emergency-Stop Buttons

Bus Technology

RFID

Enclosures

Pedal Switches

Terminal Blocks

Type Index

RONTRON-Q-JUWEL

Ø 22.3 mm

MADE IN GERMANY



About Us

← Pushbuttons and Switches

Panel Mount Jacks

Emergency-Stop Buttons

Bus Technology

RFD




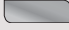


Enclosures

Pedal Switches

Terminal Blocks

Type Index

Panel Mount Jacks

Illustration	Dimensions	Description	Type
		<p>USB2.0 jack A/connector A (60 cm)</p> <p>front: USB2.0 jack type A</p> <p>rear: USB2.0 cable (length X=600 mm) with plug type A</p> <p>Attention: Mounting position of the USB jack does not comply with the USB2.0 specification</p>	front bezel: silver-coloured  RQJ_USB
		<p>USB2.0 jack A/jack A</p> <p>front: USB2.0 jack type A</p> <p>rear: USB2.0 jack type A</p>	front bezel: silver-coloured  RQJ_USB_AA
		<p>USB2.0 jack A/jack B</p> <p>front: USB2.0 jack type A</p> <p>rear: USB2.0 jack type B</p>	front bezel: silver-coloured  RQJ_USB_AB
		<p>USB2.0 jack B/jack A</p> <p>front: USB2.0 jack type B</p> <p>rear: USB2.0 jack type A</p>	front bezel: silver-coloured  RQJ_USB_BA
		<p>USB2.0 jack B/jack B</p> <p>front: USB2.0 jack type B</p> <p>rear: USB2.0 jack type B</p>	front bezel: silver-coloured  RQJ_USB_BB
		<p>USB3.0 jack A/jack A</p> <p>front: USB3.0 jack type A</p> <p>rear: USB3.0 jack type A</p>	front bezel: silver-coloured  RQJ_USB3_AA

Panel Mount Jacks

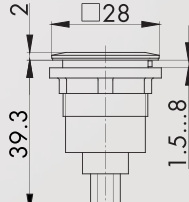
other cable lengths on request

Illustration

Dimensions

Description

Type

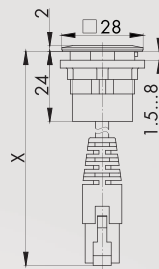


front bezel:

silver-coloured



RQJ_FW6_STB



RJ45 jack/connector (60 cm)

front:

RJ45 jack with screen

rear:

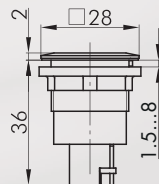
cable (length X=600 mm) with RJ45 plug with screen

front bezel:

silver-coloured



RQJ_RJ45



RJ45 jack/jack

front:

RJ45 jack with screen

rear:

RJ45 jack with screen

front bezel:

silver-coloured



RQJ_RJ45_STB

For panel mount jacks, please refer to page 572



RONTRON-Q-JUWEL

Ø 22.3 mm

MADE IN GERMANY



About Us

Pilot Lights

lenses and nameplates to be ordered separately

← Pushbuttons and Switches

Panel Mount Jacks

Emergency-Stop Buttons

Bus Technology

RFD

Enclosures

Pedal Switches

Terminal Blocks

Type Index

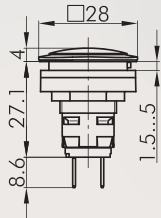
Illustration

Dimensions

Description

Type

IP65



Pilot light with Faston terminals 2.8x0.8 mm

W2x4.6d socket

Connection type:

Faston terminals 2.8x0.8 mm

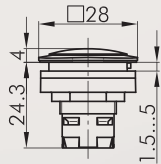
front bezel:

silver-coloured



RQJL4

IP65



Pilot light head

suitable lampholders:

ASI B B...K CT CTF CTP CZ

front bezel:

silver-coloured



RQJN

Accessories



Lens

colour:

blue



K22RRBL

yellow



K22RRGB

green



K22RRGN

clear



K22RRKL

red

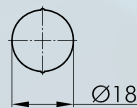


K22RRRT

opal white



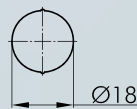
K22RRWS



Nameplate with standard imprint

please specify index number (see nameplates from page 634)

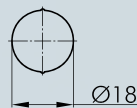
BSRR...



Nameplate with special imprint

according to customer's specification

BSRRB



Blank nameplate

BSRRU






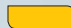



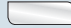





Mounting tool 16

with torque limitation

for the series OKTRON, OKTRON-JUWEL, OKTRON-R, RONTRON-R-JUWEL, RONTRON-Q-JUWEL, QUARTRON, QUARTRON-JUWEL, RX-JUWEL

S16

Accessories for Pushbuttons and Switches

Illustration	Dimensions	Description	Type
		Mounting tool 22 with torque limitation for the series QUARTEX-R(-JUWEL), KOMBITAST-R-JUWEL, RONDEX, RONDEX-M, RONDEX-JUWEL, RVA, DUX-Basic, SHORTRON, jacks of the ranges RONTRON-R/-Q-JUWEL	S22
		Mounting tool adapter with 1/4" connections for mounting tools S16 and S22	SRA
		Yellow nameplate self-adhesive PVC foil printing on request outer dia. 75 mm for mounting dia. 22.3 mm colour: yellow	 NAS_22
		Yellow nameplate with quadrilingual imprint self-adhesive PVC foil outer dia. 75 mm for mounting dia. 22.3 mm colour: yellow	 NAS_22_548
	IP40	Lead-sealable protective lid colour: transparent	 KDP22RR
	IP65 IP67	Lead-sealable, robust, tight protective lid colour: transparent black	 KDP22RR KDP22RR_SW
		Universal lens remover	USK
	IP65	Dummy to close unused mounting apertures front bezel: silver-coloured	 BVRQJ

About Us

→ Pushbuttons and Switches

Panel Mount Jacks

Emergency-Stop Buttons

Bus Technology

RFID

Enclosures

Pedal Switches

Terminal Blocks

Type Index