

Front dimensions: 30 x 30 mm
Panel cut-out: 26 x 26 mm
Front bezel height: 6 mm
Travel: 6 mm





QUARTEX-R-JUWEL



Product configurator



Overview QUARTEX-R-JUWEL series



01 Pushbutton heads	page 386	07 Pilot light heads / pilot lights	page 392
02 Emergency-stop heads	page 387	Contact blocks/lampholders	page 414
03 Knob set for potentiometers	page 388		
04 Selector heads/knob set for rotary switches	page 389/388		
05 Toggle heads	page 389		
06 Key actuators	page 390		

Housing colour



degree of protection



operating travel



tactile

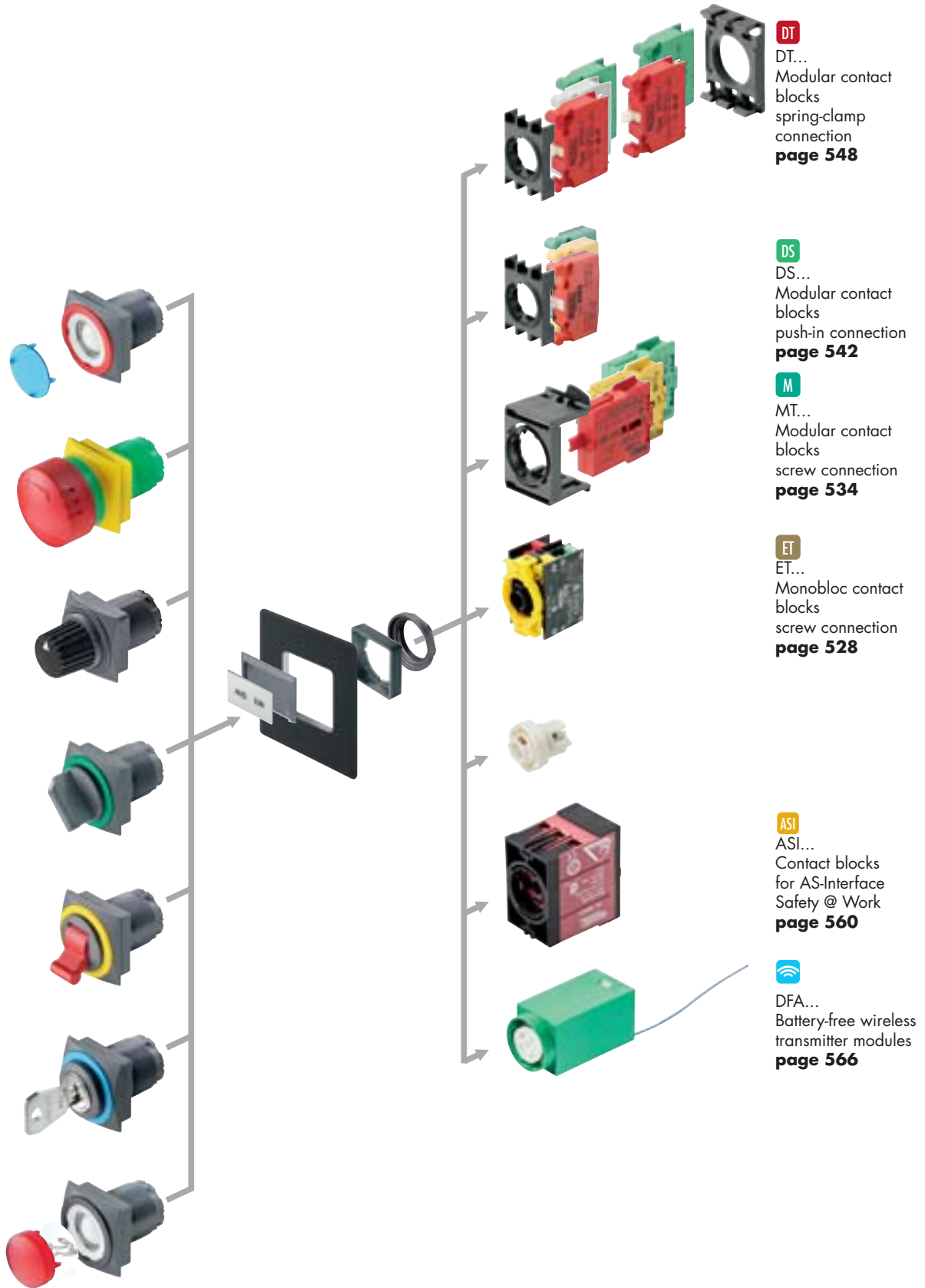


illuminating option



labelling option





DT
DT...
Modular contact blocks
spring-clamp connection
page 548

DS
DS...
Modular contact blocks
push-in connection
page 542

M
MT...
Modular contact blocks
screw connection
page 534

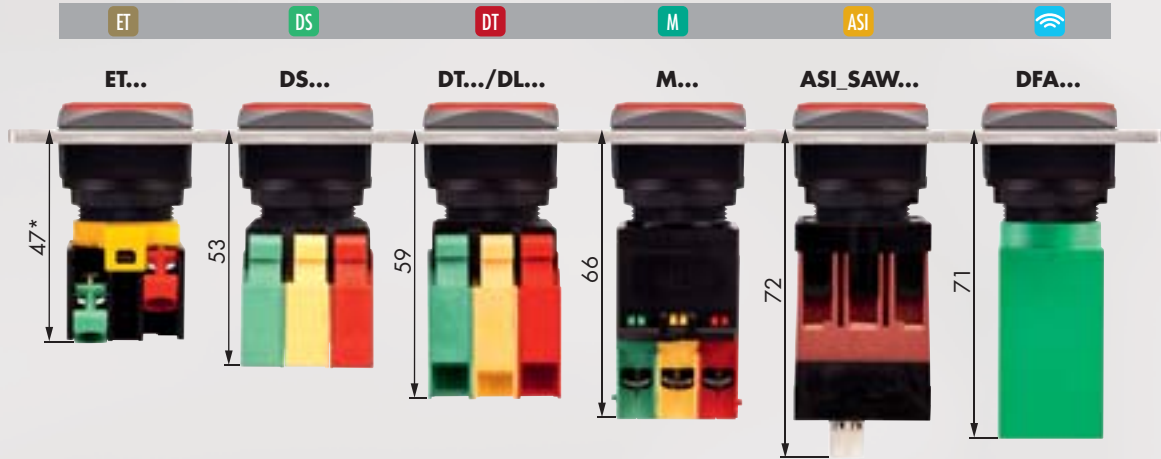
ET
ET...
Monobloc contact blocks
screw connection
page 528

ASI
ASI...
Contact blocks for AS-Interface
Safety @ Work
page 560

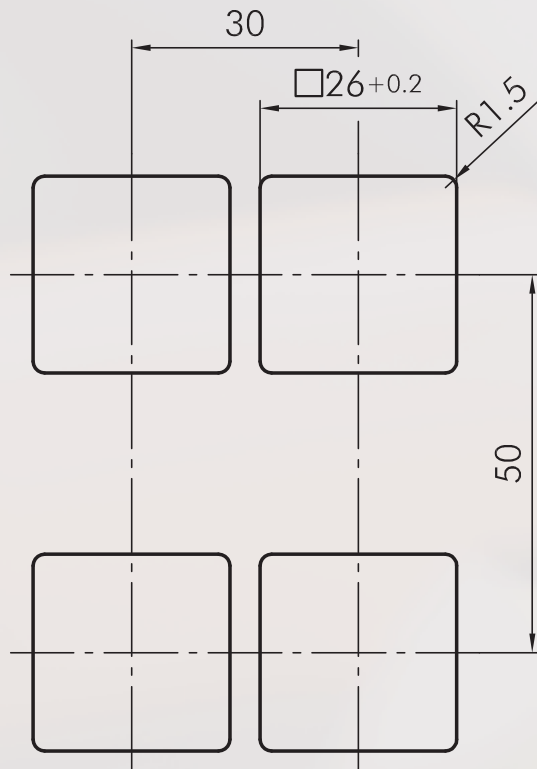
DFA
DFA...
Battery-free wireless transmitter modules
page 566

When combining the DT... contact blocks with key, selector and toggle heads, please add ..._497 to the actuator type reference!

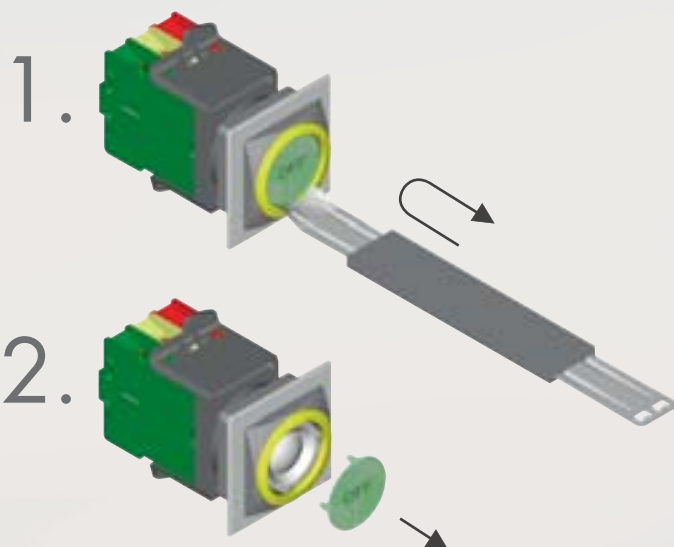
Mounting depth dimensions



Cutout dimensions



Mounting and service instructions



Pushbuttons

Illustration

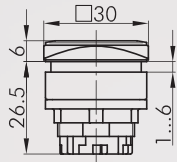
Dimensions

Description

Type

IP65

6 mm



Pushbutton head

suitable contact blocks:



front bezel:

charcoal



QRJT...

Accessories



Concave lens, transparent

colour:

blue



T26DBL

yellow



T26DGB

blue



T26DGN

clear



T26DKL

red



T26DRT

opal white



T26DWS



Concave lens, non-transparent

used for pushbuttons without inscription and illumination

colour:

blue



T26DGBL

yellow



T26DGGB

green



T26DGGN

black



T26DGSW

red

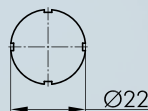


T26DGRT

white



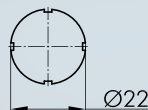
T26DGWS



Nameplate with standard imprint

please specify index number (see nameplates from page 634)

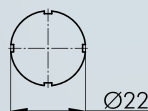
BSK...



Nameplate with special imprint

according to customer's specification

BSK B

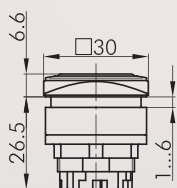


Blank nameplate

BSKU

IP67

6 mm



Membrane pushbutton head

with tightly closed, transparent silicone cap, down to -50° C

suitable contact blocks:



front bezel:

charcoal



QRJTM...

Emergency-Stops

Illustration

Dimensions

Description

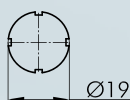
Type

Accessories



Flat lens, transparent

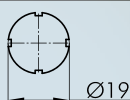
colour:	blue		T20FBL
	yellow		T20FGB
	green		T20FGN
	clear		T20FKL
	red		T20FRT
	opal white		T20FWS



Nameplate with standard imprint

please specify index number(see nameplates from page 634)

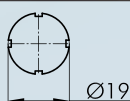
BSRX...



Nameplate with special imprint

according to customer's specification

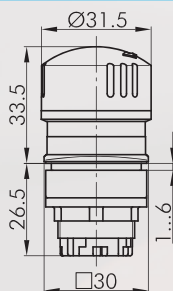
BSRXB



Blank nameplate

BSRXU

IP65



Emergency-stop head

Foolproof:	yes
Switching position indicator:	yes
Permissive Contact:	no
Anti-lock collar:	no
Release:	twist right or left
Standard:	EN 60947-5-1, EN 60947-5-5, EN ISO 13850



suitable contact blocks:




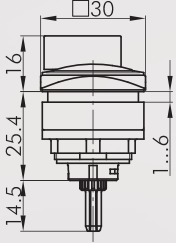


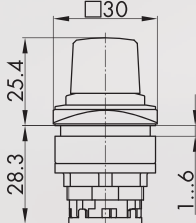
front bezel:	yellow		QRJUV
Mushroom head:	red		



For further emergency-stops, please refer to the chapter "Emergency-Stop Head" starting on page 594

The emergency-stop heads can also be supplied as latching mushroom heads with mushrooms in different colours.

Knob Sets for Rotary Switches

Illustration	Dimensions	Description	Type
		<p>Knob set for rotary switches, without inscription for Kraus & Naimer types CG4 and CA4 other versions on request</p> <p>front bezel: charcoal</p>	QRJDAU...
		<p>Knob set for rotary switches, with inscription for Kraus & Naimer types CG4 and CA4 other versions on request</p> <p>front bezel: charcoal</p>	QRJDAB...
		<p>Knob set for potentiometers for potentiometers of 6 mm shaft dia. and thread M10x0.75 delivery without potentiometer shaft length: approx. 50 mm ± 2 mm incl. fastening thread</p> <p>front bezel: charcoal</p>	QRJR...

Selector Switches (momentary/maintained)

I = Switching position
> = Spring return

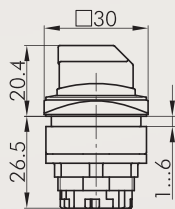
Illustration

Dimensions

Description

Type

IP65



Selector head, maintained

suitable contact blocks:

DS DT ET M

front bezel: charcoal



QRJWA...

suitable contact blocks:

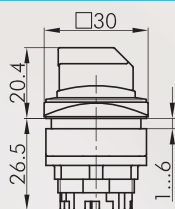
DT ET M

front bezel: charcoal



QRJWB...

IP65



Selector head, momentary

suitable contact blocks:

DS DT ET M

front bezel: charcoal

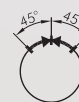


QRJSTA...

suitable contact blocks:

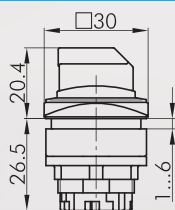
DT ET M

front bezel: charcoal



QRJSTB...

IP65



Selector head, left maintained, right momentary

suitable contact blocks:

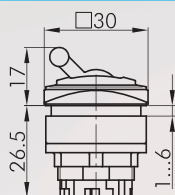
DT ET M

front bezel: charcoal



QRJWC...

IP65



Toggle head

red toggle (other colours on request)

suitable contact blocks:

DS DT ET M

front bezel: charcoal

QRJK...

About Us

→ Pushbuttons and Switches

Panel Mount Jacks

Emergency-Stop Buttons

Bus Technology

RFID

Enclosures

Pedal Switches

Terminal Blocks

Type Index

QUARTEX®-R-JUWEL

26 x 26 mm

About Us

Pushbuttons
and Switches

Panel Mount Jacks

Emergency-Stop Buttons

Bus Technology

RFID

Enclosures

Pedal Switches

Terminal Blocks

Type Index

Key Switches (momentary/maintained)

I = Switching position
> = Spring return
O = Key removable position

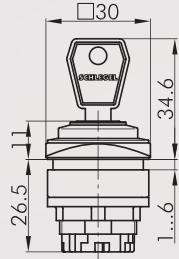
Illustration

Dimensions

Description

Type

IP65



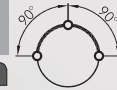
Key actuator, maintained

including two keys other lock types on request

suitable contact blocks:

DT ET M

front bezel: charcoal



QRJSSA12E...

suitable contact blocks:

DT ET M

front bezel: charcoal



QRJSSA13E...

suitable contact blocks:

DS DT ET M

front bezel: charcoal



QRJSSA14E...

suitable contact blocks:

DS DT ET M

front bezel: charcoal



QRJSSA15E...

suitable contact blocks:

DS DT ET M

front bezel: charcoal



QRJSSA17E...

suitable contact blocks:

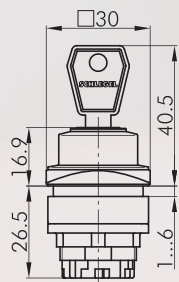
DS DT ET M

front bezel: charcoal



QRJSSA18E...

IP65



Key actuator, momentary

including two keys other lock types on request

suitable contact blocks:

DT ET M

front bezel: charcoal



QRJSSA23E...

suitable contact blocks:

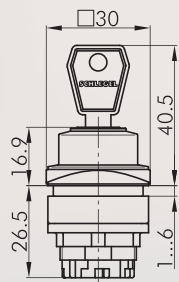
DS DT ET M

front bezel: charcoal



QRJSSA27E...

IP65



Key actuator, left maintained, right momentary

including two keys other lock types on request

suitable contact blocks:

DT ET M

front bezel: charcoal



QRJSSA24E...

Accessories for Pushbuttons and Switches

Illustration

Dimensions

Description

Type

Accessories



Spare key (standard)

standard spare key, specify key number for special locks

ESE845

About Us

→ Pushbuttons
and Switches

Panel Mount Jacks

Emergency-Stop Buttons

Bus Technology

RFID

Enclosures

Pedal Switches

Terminal Blocks

Type Index

QUARTEX®-R-JUWEL

26 x 26 mm

MADE IN GERMANY



About Us

Pushbuttons and Switches

Panel Mount Jacks

Emergency-Stop Buttons

Bus Technology

RFD

Enclosures

Pedal Switches

Terminal Blocks

Type Index

Pilot Lights

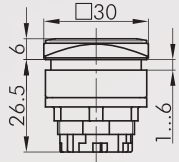
Illustration

Dimensions

Description

Type

IP65



Pilot light head

suitable lampholders:

DS DT ET M

front bezel:

charcoal



QRJN...

Accessories



Convex lens

colour:

blue



KF23BL

yellow



KF23GB

green



KF23GN

clear



KF23KL

red



KF23RT

opal white



KF23WS



High lens, transparent

colour:

blue



KH23BL

yellow



KH23GB

green



KH23GN

clear



KH23KL

red

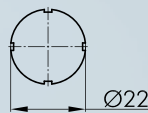


KH23RT

opal white



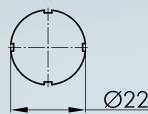
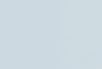
KH23WS



Nameplate with standard imprint

please specify index number (see nameplates from page 634)

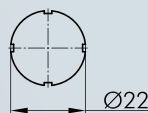
BSK...



Nameplate with special imprint

according to customer's specification

BSKB



Blank nameplate

BSKU




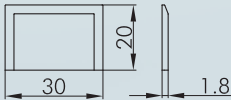

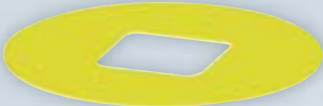
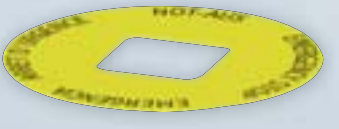

Mounting tool 22

S22

with torque limitation

for the series QUARTEX-R-(JUWEL), KOMBITAST-R-JUWEL, RONDEX, RONDEX-M, RONDEX-JUWEL, RVA, DUX-Basic, SHORTRON, jacks of the ranges RONTRON-R/-QJUWEL

Accessories for Pushbuttons and Switches

Illustration	Dimensions	Description	Type
		Mounting tool adapter with 1/4" connections for mounting tools S16 and S22	SRA
		External nameplate holder for outside marking of the actuators of the QUARTEX-R-JUWEL series, accepts self-adhesive nameplates colour: charcoal	QRJABT
		Self-adhesive nameplate laser-printed inscription according to customer's specifications dimensions: 17 x 24 mm	BZ26G
		Self-adhesive nameplate blank dimensions: 17 x 24 mm	BZ26U
		Self-adhesive nameplate with standard imprint please specify index number(see nameplates from page 634) dimensions 17 x 24 mm	BZ26L...
		Yellow nameplate self-adhesive PVC foil printing on request outer dia. 75 mm for mounting aperture 26 x 26 mm colour: yellow	NAS_26
		couleur: jaune	NAS_26_548
		Protective lid for pushbutton of the range QUARTEX®-R-JUWEL maximum opening angle 120°, with spring return Lid: transparent	KDQRJ

QUARTEX®-R-JUWEL

26 x 26 mm

MADE IN GERMANY



About Us

→ Pushbuttons and Switches

Panel Mount Jacks

Emergency-Stop Buttons

Bus Technology

RFD


Enclosures

Pedal Switches

Terminal Blocks

Type Index

Accessories for Pushbuttons and Switches

Illustration	Dimensions	Description	Type
		Universal lens remover	USK
		Dummy to close unused mounting apertures colour: charcoal	BVQRJ

About Us

→ Pushbuttons
and Switches

Panel Mount Jacks

Emergency-Stop Buttons

Bus Technology

RFID

Enclosures

Pedal Switches

Terminal Blocks

Type Index